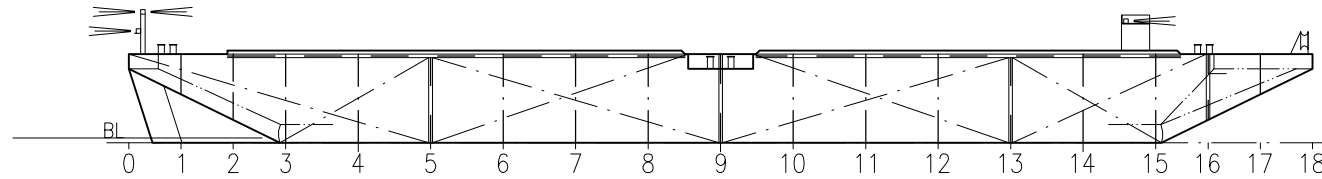
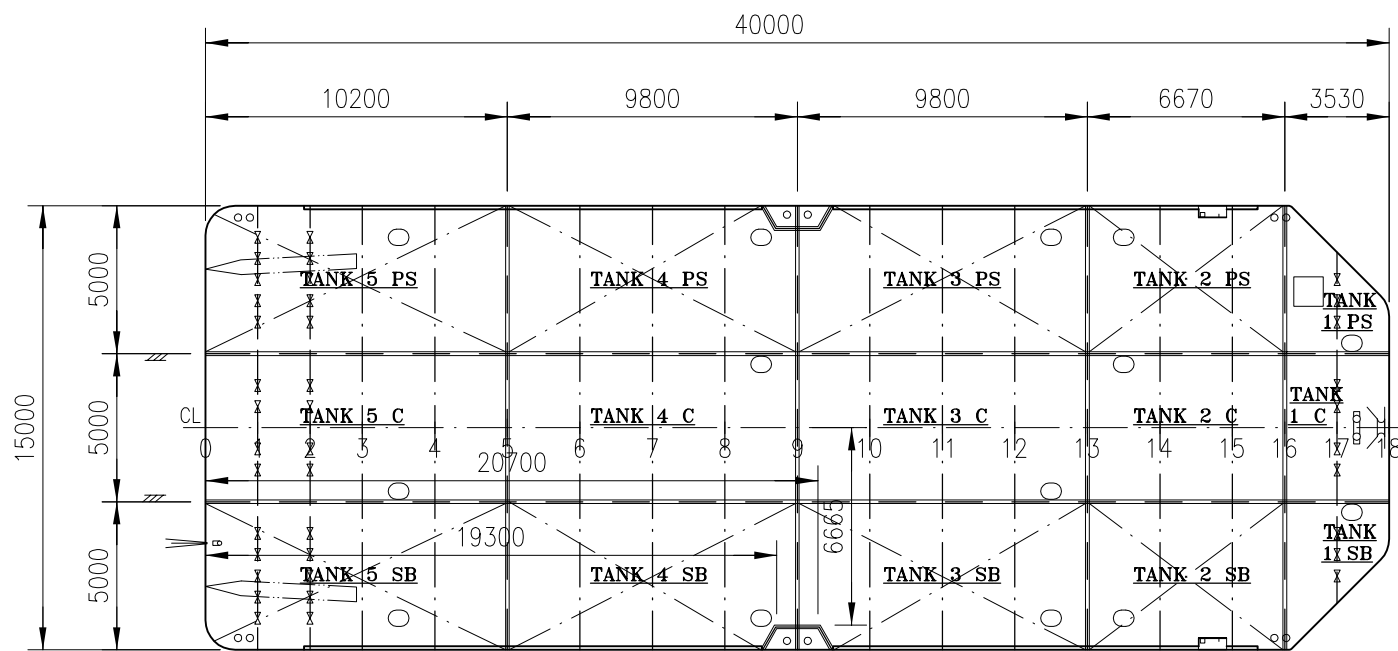


TRV SECTION



SIDE VIEW



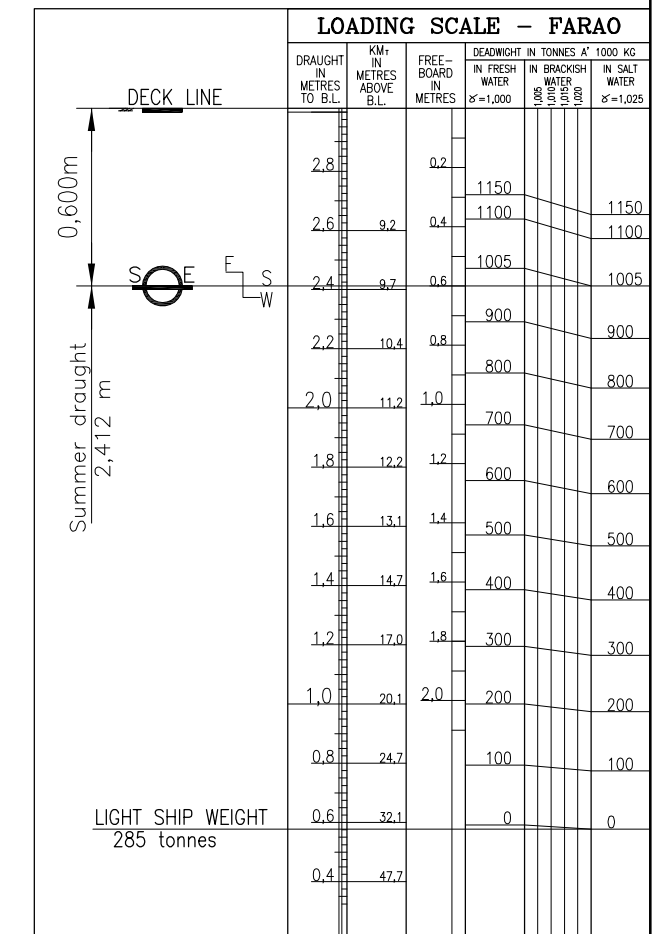
MAIN DECK

ISSUE	DESCRIPTION	DATE	DRWN	DATE	CHKD
B	LOADING SCALE ADDED	OCT.2009	OLA		

PERMISSIBLE LOADS		
LOAD CASE	MAX. PERM. LOAD	DIM. PART
ANYWHERE ON DECK	5.2 TONNES /m2	Longitudinal
EVEN DISTRIBUTION: TRV. WEB	12.9 TONNES /m.	Web
EVEN DISTRIBUTION: TRV. BULKHEAD	23.9 TONNES /m.	Buckling
EVEN DISTRIBUTION: LONG. BULKHEAD	7.0 TONNES /m.	Buckling
POINT LOAD: ON DECK	3.2 TONNES **	Plate thickness
POINT LOAD: ANYWHERE ON WEB	35.0 TONNES **	Weld *
POINT LOAD: ANYWHERE ON BULKHEAD	17.1 TONNES **	Buckling
POINT LOAD: BULKHEAD/ WEB	70.0 TONNES **	Weld *
POINT LOAD: BULKHEAD/ BULKHEAD	81.6 TONNES **	Weld *

* = WELD: Between deck & bulkhead: a=7-8 mm
Between deck & longitudinal: a=6 mm
Between deck & web: a=6 mm

** = ASSUMED PRINT: 300x300mm.
EVERY OTHER LOADCASE TO BE CONSIDERED SPECIALLY.



MAIN DIMENSIONS:

LENGTH OVER ALL: 40,0m
BREADTH MOULDED: 15,0m
DEPTH MOULDED: 3,0m

"FARAO"
CALL SIGN: SMOP

CAPACITIES OF WATER BALLAST TANKS					
TANK No.	VOLUME m3	LCG fr. L/2 m	VCG fr. BL m	TCG fr. CL m	MOM. OF INERT. m4
1 SB/PS VOID	15.6 m3	17.62	2.20	+/-4.29	-
1 C VOID	23.5 m3	17.86	2.21	0.0	-
2 SB/PS WB	94.2 m3	13.04	1.53	+/-4.97	69.5
2 C VOID	95.4 m3	13.06	1.52	0.0	-
3 SB/PS WB	142.5 m3	4.90	1.50	+/-4.98	102.1
3 C VOID	143.8 m3	4.90	1.49	0.0	-
4 SB/PS WB	142.5 m3	-4.91	1.50	+/-4.99	102.1
4 C VOID	143.8 m3	-4.90	1.49	0.0	-
5 SB/PS WB	117.8 m3	-13.99	1.67	+/-4.99	106.3
5 C VOID	118.3 m3	-14.00	1.67	0.0	-

SANDINGE & SJÖTRANSPORT
LYSEKIL

Sandinge Bogsering & Sjötransport

Skal Hedarna 166 SE-453 92 Lysekil Sweden
Tel. +46 (0)523 66 07 45 Fax. +46 (0)523 66 07 22 E-mail: info@sandinge.com Web: www.sandinge.com

YARD:	DATE: 2006-07-06	DATE: 2006-01-13	SCALE: 1:250 (A3)
	DRAWN: TK, FR	CHECKED: PH	
TITLE: FARAO CAPACITY PLAN			
DWG NO. 06221-152-01	SHEET: 1	NO. OF SHEETS: 1	ISSUE: B