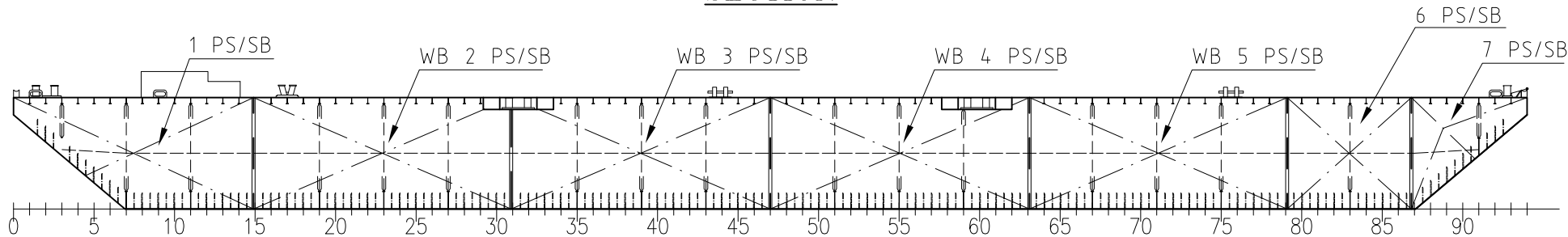
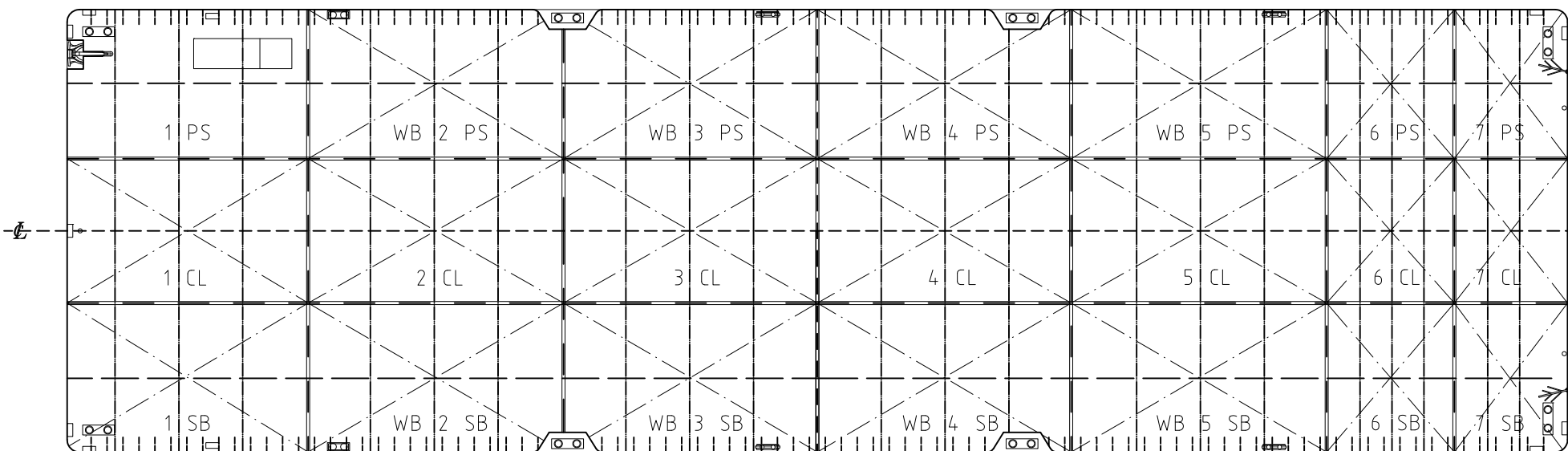


SECTION



SIDE VIEW



MAIN DECK

ISSUE	DESCRIPTION	DATE	DRWN	DATE	CHKD
A	ISSUE FOR APPROVAL	2017-09-01	LS	2017-09-01	MH
B	UPPDATED ACCORDING TO OWNERS REQUESTS	2017-10-05	LS	2017-10-06	SJ

PERMISSIBLE LOADS		
LOAD CASE	MAX. PERM. LOAD	DIM. PART
ANYWHERE ON DECK 0-6000 FROM CL	11.0 TONNES /m2	PILLAR BUCKLING
ANYWHERE ON DECK 6000-9000 FROM CL	8.0 TONNES /m2	WEB BEND
EVEN DISTRIBUTION: TRV: WEB 0-6000 FROM CL	24 TONNES /m	PILLAR BUCKLING
EVEN DISTRIBUTION: TRV: WEB 6000-9000 FROM CL	5.2 TONNES /m	BENDING WEB
EVEN DISTRIBUTION: BHD.	77.1 TONNES /m	WELD
POINT LOAD: ON DECK 0-3000 FROM CL	8.0 TONNES **	PLATE THICKN.
POINT LOAD: ON DECK 3000-9000 FROM CL	7.0 TONNES **	PLATE THICKN.
POINT LOAD: ANYWHERE ON WEB 0-6000 FROM CL	23.1 TONNES **	WELD
POINT LOAD: ANYWHERE ON WEB 6000-9000 FROM CL	11.0 TONNES **	BENDING
POINT LOAD: ANYWHERE ON BULKHEAD	23.1 TONNES **	WELD
POINT LOAD: BULKHEAD/ WEB	46.3 TONNES **	WELD
POINT LOAD: BULKHEAD/ BULKHEAD	46.3 TONNES **	WELD

** = ASSUMED PRINT: 300x300 mm.
EVERY OTHER LOADCASE
TO BE CONSIDERED SPECIALLY.

Mean draft Bok	Salt water				Fresh water		Mean draft Bok
	Displacement	MCT	TpCm	Deadweight	Density	Displacement	
3.5	3750	56	11.18	3000	1.020	2900	3.5
3.4	3500	55	11.1	2750	1.015	2750	3.4
3.3	3450	54	11.08	2700	1.010	2650	3.3
3.2	3300	53	11.06	2600	1.005	2550	3.2
3.1	3250	53	10.98	2500	1.000	2450	3.1
3	3150	52	10.96	2450	0.995	2400	3
2.9	3000	51	10.94	2400	0.990	2350	2.9
2.8	2950	51	10.88	2250	0.985	2200	2.8
2.7	2750	50	10.86	2150	0.980	2100	2.7
2.6	2700	50	10.82	2100	0.975	2050	2.6
2.5	2500	49	10.8	2050	0.970	2000	2.5
2.4	2450	49	10.78	2000	0.965	1950	2.4
2.3	2350	48	10.76	1950	0.960	1900	2.3
2.2	2250	48	10.74	1900	0.955	1850	2.2
2.1	2150	47	10.72	1850	0.950	1800	2.1
2	2000	46	10.7	1800	0.945	1750	2
1.9	1950	46	10.68	1750	0.940	1700	1.9
1.8	1850	45	10.66	1700	0.935	1650	1.8
1.7	1750	45	10.64	1650	0.930	1600	1.7
1.6	1650	44	10.62	1600	0.925	1550	1.6
1.5	1500	43	10.6	1550	0.920	1500	1.5
1.4	1450	43	10.58	1500	0.915	1450	1.4
1.3	1350	42	10.56	1450	0.910	1400	1.3
1.2	1250	42	10.54	1400	0.905	1350	1.2
1.1	1150	41	10.52	1350	0.900	1300	1.1
1	1000	41	10.5	1300	0.895	1250	1
0.9	950	40	10.48	1250	0.890	1200	0.9
0.8	850	40	10.46	1200	0.885	1150	0.8
0.7	750	40	10.44	1150	0.880	1100	0.7

"MURSU"

CALL SIGN: SBCZ

MAIN DIMENSIONS:

LENGTH OVER ALL 61,10 m
BREADTH MOULDED 18,00 m
DEPTH MOULDED 4,5 m
DRAUGHT 3,5 m
GT 1269
NT 380

CAPACITIES OF VOID TANKS

TANK No.	VOLUME (m3)	LCG fr. #0 (m)	VCG fr. BL (m)	TCG fr. CL (m)	MOM. OF INERT. (m4)
1 PS	206.9	5.71	2.49	6.00 (PS)	168.78
1 CL	207.7	5.69	2.49	0.00 (CL)	172.00
1 SB	206.9	5.71	2.49	-6.00 (SB)	168.78
2 CL	275.2	14.95	2.25	0.00 (CL)	183.46
3 CL	275.2	25.35	2.25	0.00 (CL)	183.46
4 CL	275.2	35.75	2.25	0.00 (CL)	183.46
5 CL	275.2	46.15	2.25	0.00 (CL)	183.46
6 PS	137.5	53.95	2.25	6.00 (PS)	91.73
6 CL	137.6	53.95	2.25	0.00 (CL)	91.73
6 SB	137.5	53.95	2.25	-6.00 (SB)	91.73
7 PS	69.3	58.24	2.95	6.00 (PS)	76.13
7 CL	70.1	58.27	3.00	0.00 (CL)	80.21
7 SB	69.3	58.24	2.95	-6.00 (SB)	76.13

CAPACITIES OF WATER BALLAST TANKS

TANK No.	VOLUME (m3)	LCG fr. #0 (m)	VCG fr. BL (m)	TCG fr. CL (m)	MOM. OF INERT. (m4)
WB 2 PS	275.0	14.95	2.25	6.00 (PS)	183.46
WB 2 SB	275.0	14.95	2.25	-6.00 (SB)	183.46
WB 3 PS	275.0	25.35	2.25	6.00 (PS)	183.46
WB 3 SB	275.0	25.35	2.25	-6.00 (SB)	183.46
WB 4 PS	275.0	35.75	2.25	6.00 (PS)	183.46
WB 4 SB	275.0	35.75	2.25	-6.00 (SB)	183.46
WB 5 PS	275.0	46.15	2.25	6.00 (PS)	183.46
WB 5 SB	275.0	46.15	2.25	-6.00 (SB)	183.46



Sandinge Bogsering & Sjötransport

Skal Hedarna 166 Tel. +46 (0)523 66 07 45
SE-453 92 Lysekil Fax. +46 (0)523 66 07 22
Sweden E-mail: info@sandinge.com
Web: www.sandinge.com

YARD:	DATE: 2017-08-30	DATE: 2017-08-31	SCALE: 1:250 (A3)
	DRAWN: LS	CHECKED: MH	

TITLE: **MURSU**
CAPACITY PLAN

DWG NO. 17134-3-152-01 ISSUE: B